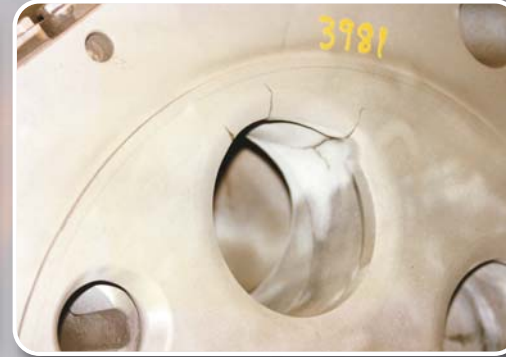




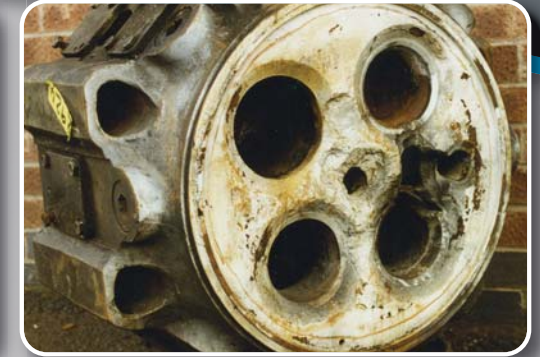
Hanshin 46 - Lifted flame plate.



Stork TM410 - Dropped valve
with injector port damage.



Pielstick PC4-2 -
Blow-by with fractures.



MaK 601 - Injector, airstart inlet
pocket mechanical damage.



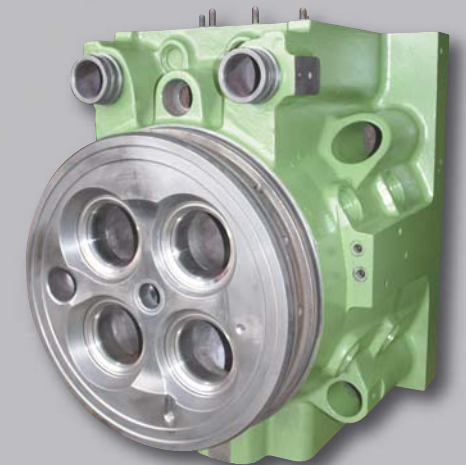
Wartsila 46 - Impact damage
to flame face.



MAN48/60 - Extensive
mechanical damage.



MaK M32 - Exhaust valve seat
pocket eroded beyond
manufacturers maximum oversize.



MAN 32/40 - Reconditioned,
ready for despatch.